



MONTHLY MEMBERSHIP PROGRESS REPORT

District 105BN

Results as of: 06/30/2018

GMT: JOOST PAIJMANS

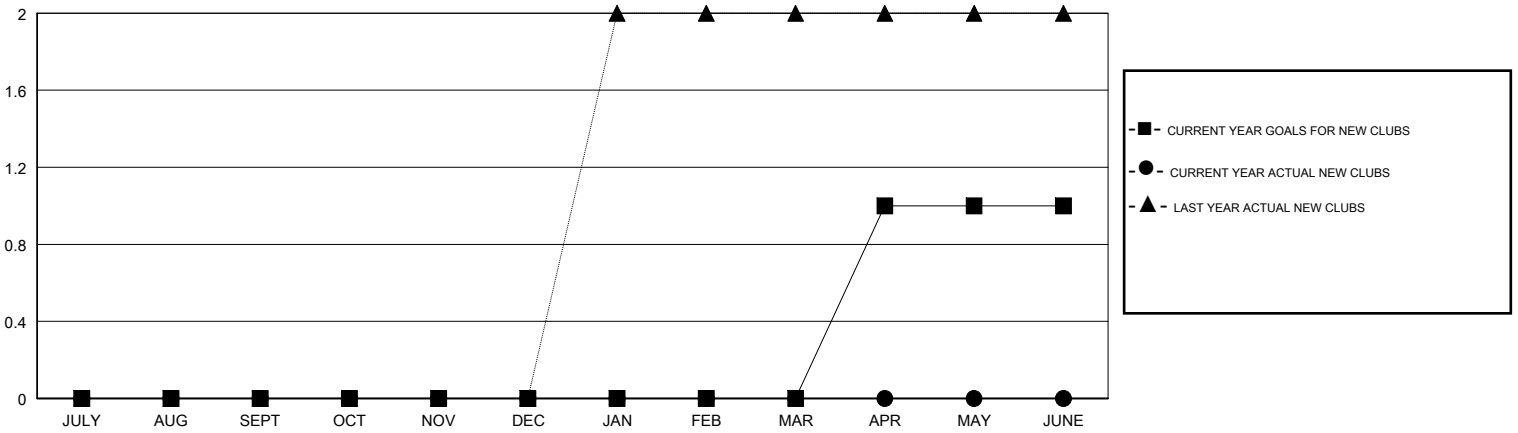
LOCATION ENGLAND

GMT CA

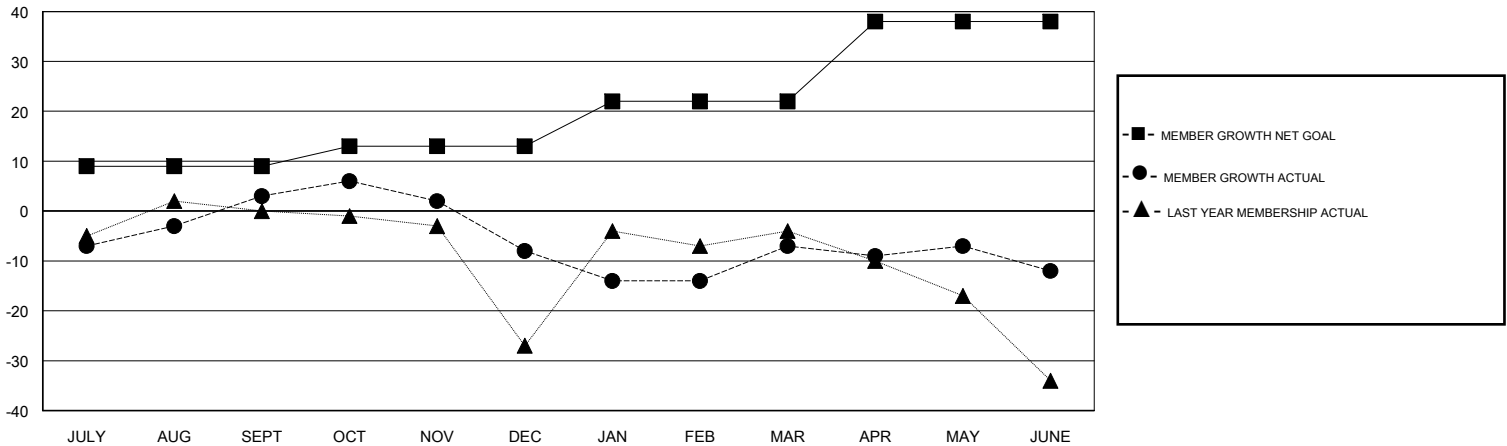
Clubs			
RESULTS FOR 2017-2018			
QUARTER	NEW CLUB GOAL	NEW CLUBS	DROPPED CLUBS
JULY/AUG/SEPT	0	0	0
OCT/NOV/DEC	0	0	0
JAN/FEB/MAR	0	0	0
APR/MAY/JUNE	1	0	0

Members			
RESULTS FOR 2017-2018			
QUARTER	MEMBER GROWTH NET GOAL	MEMBER GROWTH ACTUAL	DROPPED MEMBERS ACTUAL (including transfers)
JULY/AUG/SEPT	9	29	22
OCT/NOV/DEC	4	11	19
JAN/FEB/MAR	9	17	15
APR/MAY/JUNE	16	24	27

GOALS AND ACTUAL NEW CLUBS CUMULATIVE



GOALS AND ACTUAL MEMBERS CUMULATIVE



DROPPED CLUBS: 0	31 CLUBS OF 47 ADDED 1 OR MORE NEW MEMBERS	<u>GENDER DISTRIBUTION</u>	
DROPPED MEMBERS		MALE	519 (69.76%)
DECEASED	15	FEMALE	225 (30.24%)
CLUB CANCELLED	0	Women Percentage Fiscal Year Goal: 45%	
OTHER	68	TOTAL FAMILY UNIT MEMBERS	0
TOTAL	83	FAMILY MEMBERS PAYING HALF DUES	0

[CLICK HERE FOR CUMULATIVE MEMBERSHIP DATA](#)